

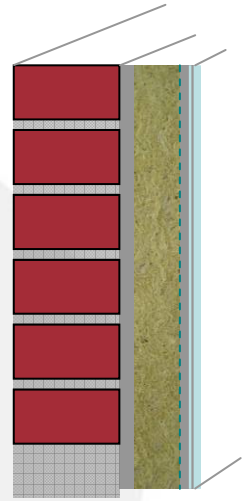
ThermoGuard 外墙保温岩棉板

External Wall Thermal Insulation Slab

Product Description 产品介绍

CSR *ThermoGuard* Rockwool Slab is manufactured from a molten mixture of natural rock which is processed into fibers advanced European technology and bonded with a thermosetting resin. The product is non-combustible and fire resistant with a high fusion temperature in excess of 1000°C. No smoke development and does not produce toxic gases in case of fire. CSR Rock wool products are particularly suitable for thermal insulation, fire protection and sound attenuation.

ThermoGuard 外墙保温用岩棉板是由天然岩石熔融后离心吹甩形成纤维，加入少量粘结剂后固化成型。该产品为不燃性的防火建筑材料，熔结温度超过1000°C，燃烧时不会产生有毒烟气。西斯尔岩棉产品广泛应用于建筑物的保温隔热、防火和吸音隔音。



Applications for ETICS 岩棉在外墙外保温系统中的应用

External Thermal Insulation Composite Systems (ETICS) are applied to external surfaces of new or existing walls and/or soffits to improve on thermal insulation performance.

ThermoGuard is intended for most types of buildings with compact walls, e.g. concrete or brick structures. This product has excellent compressive and tensile strength properties, is dimensionally stable and the thermal coefficient of expansion is virtually zero. The product has a high ageing resistance and is compatible to use with most quality rendering systems.

ThermoGuard will provide an effective means to increasing thermal efficiency, fire safety and exceptional weather protection.

The insulation requirements will dependent on the load and the plaster work system proposed.

外墙外保温系统适用于新建或既有建筑外墙的保温或节能改造。

ThermoGuard 保温板适用于基墙为混凝土或砖墙等密实结构的建筑外墙保温。由于产品具有抗压和抗拉伸强度高，稳定性好，不会产生热膨胀或收缩，耐老化，与系统的兼容性好等优点，能提供建筑保温节能、防火以及极端气候保护等多种选择。

建议根据系统参数和安装的要求，选择适当型号的外墙保温产品。

Packaging and Storage 包装和储存

- Standard package is shrink-wrapped polythene.
标准包装为收缩聚乙烯薄膜。
- Products shall be stored indoors or under a waterproof covering.
室内储存或有适当的防水遮盖。

Dimensions 规格尺寸

Thickness (mm) 厚度:	30, 40, 50, 80, 100
Length × Width (mm) 长 × 宽:	1200 × 600

Other dimensions available on request.
欢迎咨询提供其它产品尺寸的可能。

ThermoGuard 外墙保温岩棉板

External Wall Thermal Insulation Slab

Technical Parameters 技术参数

Properties 产品性能	TG 1	TG2	TG3	Unit 单位	Standards 测试标准
Compressive stress σ_{10} 抗压强度(垂直于表面)	≥ 40	≥ 60	≥ 80	kPa	EN 826
Tensile strength perpendicular to faces 抗拉强度(垂直于表面)	≥ 7.5	≥ 10	≥ 15	kPa	EN 1607
Fire performance 防火性能	Non-combustible 不燃性			-	ISO 1182
	Reaction to fire - Class A2 对火反应-A2级			-	EN 13501-1 GB/T 8624-2006
Thermal conductivity λ_{20} 平均温度20°C导热系数	≤ 0.040			W/mK	ASTM C518 or GB/T 10295
Thermal resistance R 热阻值 R	calculated by using the equation $R=d/\lambda$ (d-thickness of insulation)			m ² K/W	EN 12667
憎水率 Water repellence	>99			%	GB/T 10299
Water absorption (partial immersion) 吸水性(部分浸入)	< 0.5			kg/m ²	EN 1609 BS 2972
Moisture absorption 吸湿性	< 0.2			% by vol.	ASTM C1104
Dimensional stability 尺寸稳定性	< 1.0			%	EN 1604
Vapour diffusion resistance factor μ 湿阻因子	approximately equal to 1.5				EN 12086
Melting point 熔化温度	> 1000			°C	
Environment 环保	No asbestos, CFCs, HCFCs free				
Insulation system 保温系统	For details of technical information on ETICS, please refer to EN 13500: External Thermal Insulation Composite Systems (ETICS) based on mineral wool--Specification				

The information given in this data sheet is believed to be correct by CSR at the date of publication. Data may change from time to time due to continuous development of the material.
MSDS will be made available upon request for safe handling instructions.

CSR (GUANGZHOU) BUILDING MATERIALS CO., LTD 西格尔(广州)建材有限公司

Marketing & Technical Center 营销和技术中心

Unit 2515, Profit Plaza, No.76, Huangpu Road West, Guangzhou, Guangdong, P.R.C
中国广东省广州市黄埔大道西76号富力盈隆广场2515室
T电话 86-20-38393636
F传真 86-20-38393637
www.csr.com.cn